



Quinte Local Immigration Partnership Terms of Reference and Governance Model

Includes Revised Partner Listing December 10 2019

Prepared jointly by:

Orlando Ferro

QLIP Project Administrator / Facilitator

Executive Director - Quinte Immigration Services QUIS

John L. Robertson

QLIP Project Coordinator

Quinte Local Immigration Partnership QLIP

Table of Contents

The Quinte Local Immigration Partnership.....	3
Quinte Local Immigration Partnership - Founding Organizations	3
QLIP Management Terms of Reference and Governance Model	3
1.1 QLIP - Governance Model	4
1.2 QLIP Governance Model - Foundation.....	4
1.3 QLIP Project Oversight Group	4
1.4 QLIP	5
1.5 QLIP Guiding Values and Ethics.....	5
1.6 Roles & Responsibilities of the QLIP	5
1.7 Decision-Making and Conflict Resolution Process	6
1.8 QLIP Teams.....	6
1.9 Roles and Responsibilities of QLIP Teams.....	6
1.10 QLIP Partnership - Governance Model Illustration	7
1.11 QLIP Partnership - Organization Model for Working Groups	8
1.12 The Quinte Local Immigration Partnership (50+):	9
FEDERAL GOVERNMENT	9
PROVONCIAL GOVERNMENT	9
MUNICIPAL GOVERNMENT.....	9
EDUCATION	10
ECONOMIC DEVELOPMENT and LABOUR MARKET INTEGRATION.....	10
EMPLOYERS GROUP	12
HEALTH CARE SERVICES	12
ACCESSIBILITY – LEGAL SERVICES.....	13
SOCIAL SERVICES and ADVOCACY	13
QLIP PARTNER LISTING BY ORGANIZATION	14
References	15
End Notes:.....	16

The Quinte Local Immigration Partnership

The Quinte Local Immigration Partnership (QLIP) is an initiative of Immigration, Refugees and Citizenship Canada IRCC and is comprised of a group of significant Quinte Region stakeholders that come together regularly to develop a coordinated, comprehensive and strategic approach to immigration and integration of newcomers in the Quinte Region. The QLIP initiative represents a process to examine services currently available and considers how the delivery could be enhanced, modified, or expanded to facilitate equitable access to services for newcomers and build upon the Quinte Region's capacity to provide a welcoming and inclusive community.

Partners can be drawn from many sources including but not limited to local and regional governments, local school boards, community organizations, immigrant serving agency, language training providers, local associations or bodies, health care providers, employment networks, chambers of commerce, economic development corporations and employers. The QLIP has in place a Project Coordinator, a Project Administrator / Facilitator and Administrative Services.

Quinte Local Immigration Partnership - Founding Organizations

Prior to the formation of the Quinte Local Immigration Partnership QLIP there were previous local projects formed in support of immigration and in assisting newcomers to the Quinte Region. These early initiatives were supported by a core group of founding organizations. The evolving nature of these projects brought together a growing number of other groups that are now joined together to form the QLIP. The QLIP has steadily built upon the efforts of these previous local initiatives, leading to the present-day Partnership's purpose to facilitate a closer collaboration between Quinte Region stakeholders in order to coordinate activities, create efficiencies, and build the capacity of the Partners in achieving a more welcoming community for newcomers.

QLIP Management Terms of Reference and Governance Model

The QLIP management Terms of Reference and Governance Model outlines how the QLIP operates to ensure the QLIP's sustainability, its ability to meet the needs of the group, and to maintain efforts in achieving its objectives. It enables the partnership to evolve and become open to the possibilities of additional sources of funding and/or open to opportunities, and to consider becoming aligned with collaborative endeavours in order to facilitate successful and significant outcomes for newcomers.

1.1 QLIP - Governance Model

The QLIP management terms of reference and governance model is a collaborative one and is adapted in part from the constellation modelⁱ. The QLIP governance model provides for a QLIP that is governed by a flexible form of affiliation that enables organizations to work together including working together within Teams and provides for:

- objective leadership
- fundamental support and funding
- Project Coordination, Administration/Facilitation and Administrative Services (Oversight Group)
- collaborative and coordinated actions for superior outcomes

The QLIP terms of reference and governance model expects to:

1. ensure that all three levels of government are involved
2. provide for a proper focus in terms of resources
3. create efficiencies while emphasizing autonomy amid the collective
4. provide the necessary flexibility to work with the possibility of a variety of funders
5. provide an adaptable structure able to link up with diverse supporters and resource providers
6. reduced administration and costs through a collaborative approach to resource development
7. help to avoid duplication of efforts and competitive funding
8. provide for balanced approach to endeavours
9. develop greater capacity and emphasize core competencies
10. build upon the existing resources
11. provide a level of flexibility and collaboration with an action focus

1.2 QLIP Governance Model - Foundation

The QLIP governance model has at its foundation the three levels of government that are vital support and/or contributing vehicles that carry the QLIP to its current and future success.

1.3 QLIP Project Oversight Group

A QLIP Project Coordination, Facilitation/Administration and Administrative Services (Oversight Group) is the managing arm that ensures all supporting activities for the Partnership are in place, and to an extent encourages the work of Partnership and the Teams. This group also works toward building a stronger sustainable mandate for the Partnership. The “Oversight Group” is comprised of the QLIP Project Coordinator, the QLIP Program Facilitator/Administrator, and the supporting activities within the administrative requirements function.

1.4 QLIP

The QLIP is the focal point for the many stakeholders and is an independent loose affiliation of non-governmental organizations, government agencies, federations, health groups, education groups, citizens and others interested in immigration and integration that fits the needs of the Quinte Region.

The QLIP Partnership:

- directs action
- develops a shared voice
- builds capacity and support
- maintains ties with the broader community
- may expand to more actively engage a broader association

1.5 QLIP Guiding Values and Ethics

The QLIP by its raison d'être encourages contributions from newcomers in developing strategies that will provide support for a more welcoming community. In addition, the Partnership values the diversity that exists within the community and agrees to a stance of anti-racism, anti-oppression, gender equity and basic cultural diversity principles. Partners agree to be honest and transparent in their participation.

1.6 Roles & Responsibilities of the QLIP

In reference to the evolution and sustainability of the QLIP the following provides a guide to its roles and responsibilities. The QLIP will:

1. ensure that mechanisms are in place to support the Partnership, and its Teams;
2. help to facilitate focused Team activities as an extension of the QLIP
3. be responsible for making decisions regarding the work, direction, and development of the partnership as a whole, maintaining primary responsibility for a possible range of activities.
4. work in concert with the "Oversight Group".
5. in concert with the "Oversight Group" ensure that no advocacy stance will be taken regarding issues on behalf of an organization without the approval of the organization.

1.7 Decision-Making and Conflict Resolution Process

The “Oversight Group” and the QLIP will work to consensus to ensure that the decisions agreed upon are deemed to be in the best interest of the Partners and if consensus cannot be reached Roberts Rules will be used. Any member of the QLIP may decline participation in a particular undertaking without question. The “Oversight Group” will have financial and legal control.

1.8 QLIP Teams

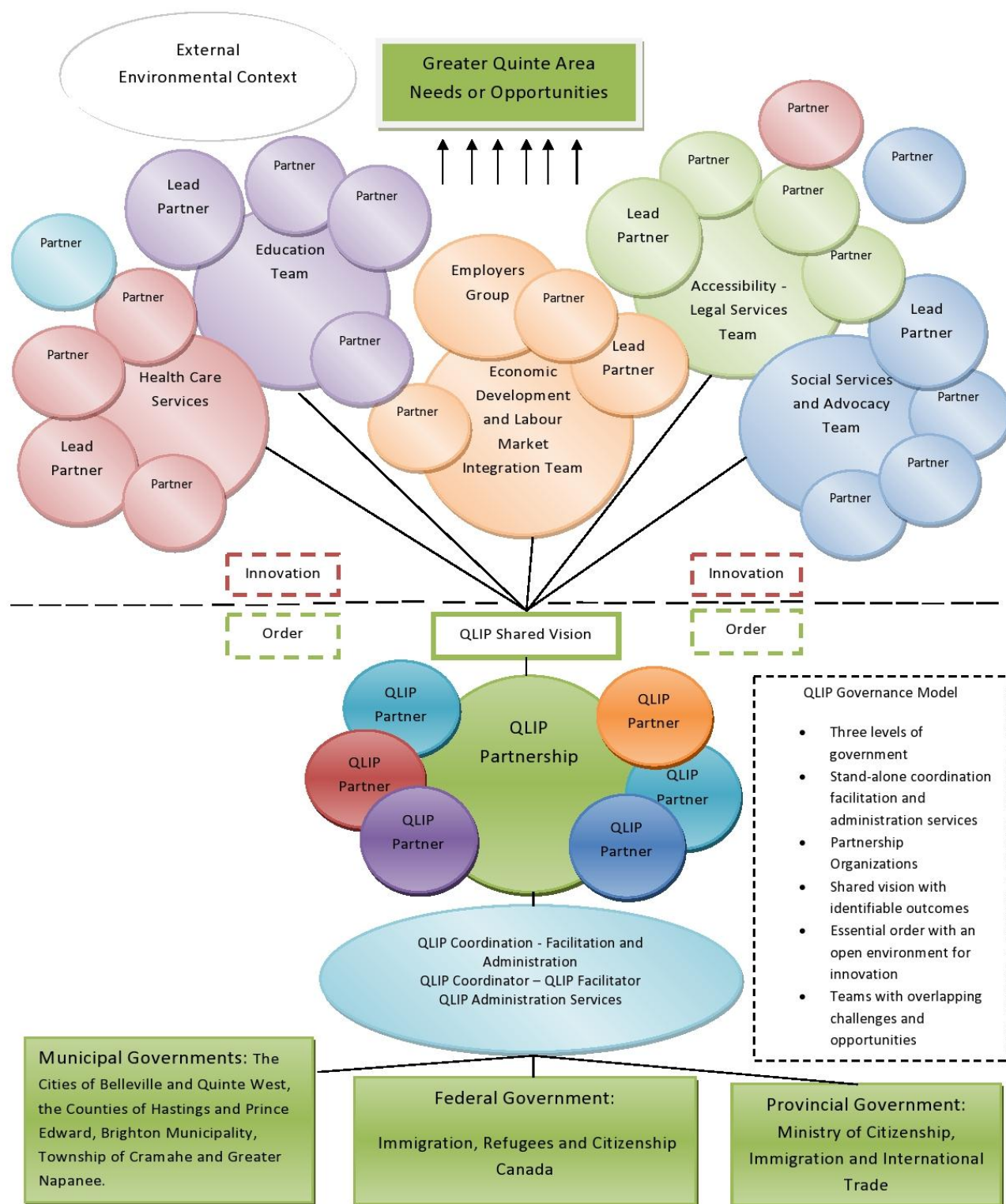
A QLIP Team is basically a working group that involves organizations interested in working together on a particular issue or concern relating to immigration and the needs of newcomers to the Quinte Region. As an example, a QLIP Health Team may bring health experts, practitioners, advocates, program administrators and interested parties together to collaborate on specific health related concerns affecting newcomers to the Quinte Region. Teams are adaptable and independent with a productive focus. In addition, these Teams are supported by the “Oversight Group”. A member of the QLIP may request the creation of a Team and it may be approved by consensus within the Partnership. The approach facilitates the inclusion of members having a ubiquitous and collaborative nature.

1.9 Roles and Responsibilities of QLIP Teams

Teams are independent groups that maintain a direct connection to the QLIP including a reporting relationship. This connectedness also ensures that Teams have the overall support necessary and can benefit from the synergy that may be created. Teams will by their nature be able to organize in any manner that leads to valuable outcomes. In addition, Teams will not be encumbered by responsibilities such as finances, contracts, and interactions with funders, as these support functions are carried out by the “Oversight Group”. A Team established and supported by the Partnership will have access to the services of the “Oversight Group” that will if necessary determine appropriate Team resources.

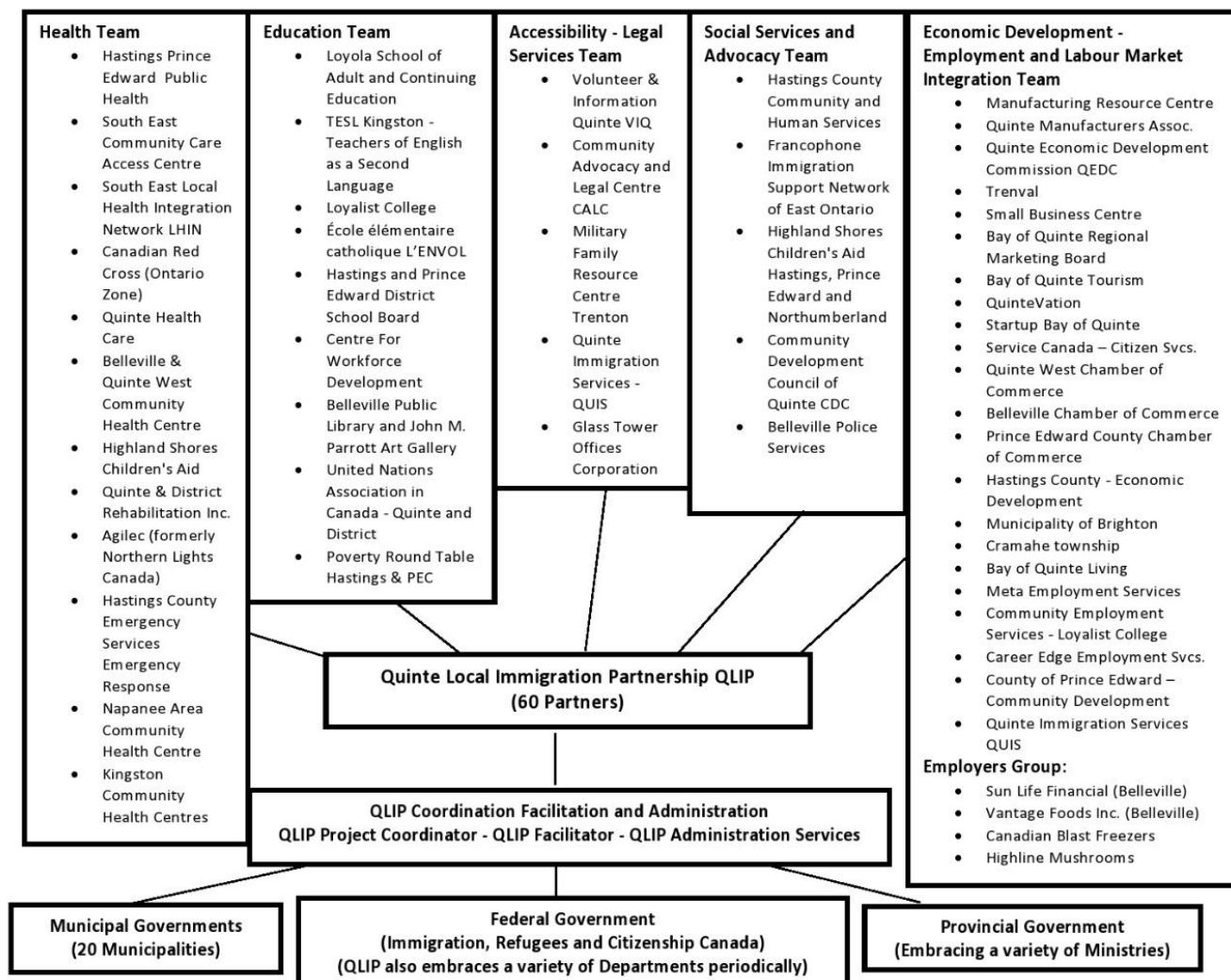
1.10 QLIP Partnership - Governance Model Illustrationⁱⁱ

QLIP Partnership – Governance Model



1.11 QLIP Partnership - Organization Model for Working Groups

Quinte Local Immigration Partnership QLIP - Organization Model and Working Groups (60 Partners)



1.12 The Quinte Local Immigration Partnership (60):

FEDERAL GOVERNMENT

Immigration, Refugees and Citizenship Canada

<http://www.cic.gc.ca>

PROVONCIAL GOVERNMENT

Ministry of Citizenship Immigration and International Trade MCIIT

www.citizenship.gov.on.ca

Ontario Ministry of Advanced Education and Skills Development (Belleville)

<http://www.tcu.gov.on.ca>

MUNICIPAL GOVERNMENT

City of Belleville

www.city.belleville.on.ca

City of Quinte West

www.city.quintewest.on.ca

Greater Napanee

www.greaternapanee.com

Corporation of the County of Prince Edward

www.pecounty.on.ca

Corporation of Hastings County

www.hastingscounty.com

Municipality of Brighton

www.brighton.ca

Cramahe Township

www.cramahe.ca

EDUCATION

Loyola School of Adult and Continuing Education

www.learningatloyola.ca

TESL Teachers of English as a Second Language - Kingston

<http://www.teslkingston.org>

Loyalist College

<http://www.loyalistcollege.com>

Catholic Elementary School - The Flight

Conseil des écoles catholiques de centre-est

École élémentaire catholique L'ENVOL

<http://lenvol.ecolecatholique.ca>

Hastings and Prince Edward District School Board

www.hpedsb.on.ca

Centre for Workforce Development CFWD

<https://cfwd.ca>

Belleville Public Library and John M. Parrott Art Gallery

<http://www.bellevillelibrary.com>

United Nations Association in Canada - Quinte and District

www.unacquinte.com

ECONOMIC DEVELOPMENT and LABOUR MARKET INTEGRATION

Manufacturing Resource Centre

<http://www.manufacturingrc.ca>

Quinte Manufacturers Association

<http://www.quintemanufacturing.com>

Quinte Economic Development Commission QEDC

www.quintedevelopment.com

Trenval – Business Development Corporation

<http://trenval.on.ca>

Small Business Centre

www.smallbusinessctr.com

QuinteVation

<http://www.quintevation.ca>

Startup Bay of Quinte

<https://www.startupcan.ca/ourwork/startup-bay-quinte>

Service Canada - Citizen Services

www.servicecanada.gc.ca

Quinte West Chamber of Commerce

www.quintewestchamber.on.ca

Belleville Chamber of Commerce

www.bellevillechamber.ca

Prince Edward County Chamber of Commerce

www.pecchamber.com

Hastings County - Economic Development

<http://www.hastingscounty.com/business/economic-development>

Bay of Quinte Regional Marketing Board

<http://bayofquinte.ca>

Bay of Quinte Tourism

<http://bayofquinte.ca>

Meta Employment Services (Belleville, Marmora)

www.metaemploymentservices.com

Community Employment Services - Loyalist College (Belleville and Bancroft)

www.loyalistcollege.com/employment/community-employment-services

Career Edge – Employment Services (Napanee, Picton and Trenton)

www.careeredge.on.ca

Corporation of the County of Prince Edward – Community Development

http://pecounty.on.ca/government/community_development/index.php

EMPLOYERS GROUP

Sun Life Financial (Belleville)

www.sunlife.ca

Vantage Foods Inc. (Belleville)

<http://www.vantagefoods.net/service-centres/belleville-on.html>

Canadian Blast Freezers (Trenton)

www.cbfreezers.com

Highline Mushrooms (Wellington)

<http://www.highlinemushrooms.com/en/index.php>

HEALTH CARE SERVICES

Hastings Prince Edward Public Health

<http://hpepublichealth.ca>

South East Community Care Access Centre (SE CCAC)

<http://healthcareathome.ca/southeast/en>

South East Local Health Integration Network (SE LHIN)

www.southeastlhin.on.ca

Canadian Red Cross (Ontario Zone)

www.redcross.ca

Quinte Health Care

<http://www.qhc.on.ca>

Belleville & Quinte West Community Health Centre

www.bqwchc.com

Highland Shores Children's Aid - Hastings, Prince Edward and Northumberland

<http://highlandshorescas.com>

Quinte & District Rehabilitation Inc.

www.quinterehab.com

Agilec (formerly Northern Lights Canada)

www.agilec.ca

Hastings County Emergency Services - Emergency Response

<http://www.hastingscounty.com/services/emergency-services>

Napanee Area Community Health Centre

www.kchc.ca/index.cfm/napanee-area-chc

ACCESSIBILITY – LEGAL SERVICES

Volunteer & Information Quinte

www.viq.ca

Community Advocacy and Legal Centre CALC

www.communitylegalcentre.ca

Military Family Resource Centre – Trenton

<https://www.cafconnection.ca/Trenton/Home.aspx>

Quinte Immigration Services - QUIS

www.quis-immigration.org

Glass Tower Offices Corporation

<http://glasstowerofficescorporation.blogspot.ca>

SOCIAL SERVICES and ADVOCACY

Hastings County Community and Human Services

<http://www.hastingscounty.com>

Francophone Immigration Support Network of East Ontario

www.cesoc.ca

Community Development Council of Quinte CDC

www.cdcquinte.com

Belleville Police Services

www.police.belleville.on.ca

Poverty Roundtable Hastings Prince Edward PRTHE

<http://povertyroundtablehpe.ca/prt>

QLIP PARTNER LISTING BY ORGANIZATION

- 1. Immigration, Refugees and Citizenship Canada**
- 2. Ministry of Citizenship, Immigration and International Trade MCIIT**
- 3. Ontario Ministry of Advanced Education and Skills Development (Belleville)**
- 4. City of Belleville**
- 5. City of Quinte West**
- 6. Greater Napanee**
- 7. Corporation of the County of Prince Edward (the Municipality & Community Development)**
- 8. Corporation of Hastings County**
- 9. Municipality of Brighton**
- 10. Cramahe Township**
- 11. Loyola School of Adult & Continuing Education**
- 12. TESL Kingston - Teachers of English as a Second Language Kingston**
- 13. Loyalist College**
- 14. École élémentaire catholique - L'Envol - Catholic Elementary School - The Flight**
- 15. Hastings and Prince Edward District School Board**
- 16. Centre for Workforce Development CFWD**
- 17. Belleville Public Library and John M. Parrott Art Gallery**
- 18. United Nations Association Canada UNAC - Quinte Branch**
- 19. Manufacturing Resource Centre**
- 20. Quinte Manufacturers Association**
- 21. Quinte Economic Development Commission**
- 22. Trenval Business Development Corporation**
- 23. Small Business Centre**
- 24. QuinteVation**
- 25. Startup Bay of Quinte**

- 26. Service Canada – Citizen Services**
- 27. Quinte West Chamber of Commerce**
- 28. Belleville Chamber of Commerce**
- 29. Prince Edward County Chamber of Commerce**
- 30. Hastings County - Economic Development**
- 31. Bay of Quinte Regional Marketing Board**
- 32. Bay of Quinte Tourism**
- 33. META Employment Services**
- 34. Community Employment Services Loyalist College**
- 35. Career Edge – Employment Services**
- 36. Sun Life Financial**
- 37. Vantage Foods Inc.**
- 38. Canadian Blast Freezers**
- 39. Highline Mushrooms**
- 40. Hastings Prince Edward Public Health**
- 41. South East Community Care Access Centre (SE CCAC)**
- 42. South East Local Health Integration Network (SE LHIN)**
- 43. Canadian Red Cross**
- 44. Quinte Health Care QHC**
- 45. Belleville and Quinte West Community Health Care**
- 46. Highland Shores Children's Aid - Hastings, Prince Edward and Northumberland**
- 47. Quinte and District Rehabilitation Inc.**
- 48. Agilec (formerly Northern Lights Canada)**
- 49. Hastings County Emergency Services – Emergency Response**
- 50. Napanee Area Community Health Centre**
- 51. Volunteer & Information Quinte VIQ**
- 52. Community Advocacy & Legal Centre CALC**
- 53. Trenton Military Family Resource Centre MFRC**
- 54. Quinte Immigration Services QUIS**
- 55. Glass Tower Offices Corporation**
- 56. Hastings County Community and Human Services**
- 57. Francophone Immigration Support Network of East Ontario**
- 58. Community Development Council of Quinte CDC**
- 59. Belleville Police Service**
- 60. Poverty Roundtable Hastings Prince Edward PRTHE**

References

Tonya Surman, Mark Surman, *Open Sourcing Social Change: Inside the Constellation Model in Technology Innovation Management Review*, September 2008, <http://timreview.ca/node/183> adapted from Listening to the Stars: The Constellation Model of Collaborative Social Change published in the first

edition of Social Space, a journal published by the Lien Centre for Social Innovation at the Singapore Management University.

Tonya Surman (Prepared by), *Canadian Partnership for Children's Health and Environment (CPCHE) - Governance Model*, The Commons Group, 107 Indian Road, Toronto, Ontario M6R 2V5, December 10, 2001 Update July 12, 2004 to reflect name change. Available at:

http://s.socialinnovation.ca/files/CPCHE%20Management%20Terms%20of%20Reference%20-%20updated%20Feb%2704_FINAL.doc or at <http://socialinnovation.ca/constellationmodel>

Surman, Tonya. *Constellation Collaboration, A model for multi-organizational partnership, Centre for Social Innovation*, June 2006. Licensed under the Creative Commons Attribution-ShareAlike 2.5 To view a copy of the licence, visit <http://creativecommons.org/licenses/by-sa/2.5/legalcode>

End Notes:

ⁱ Surman, Tonya. *Constellation Collaboration, A model for multi-organizational partnership, Centre for Social Innovation*, June 2006. To view a copy of the licence, visit <http://creativecommons.org/licenses/by-sa/2.5/legalcode>

The QLIP Partnership - Governance Model Illustration 1.11 on page 7, was developed in part from the Constellation Model originally developed by:

ⁱⁱ Surman, Tonya. *Constellation Collaboration, A model for multi-organizational partnership, Centre for Social Innovation*, June 2006. To view a copy of the licence, visit <http://creativecommons.org/licenses/by-sa/2.5/legalcode>